

FEATURES

ALL HOMES AT THE ISLES INCLUDE QUALITY FEATURES YOU SEE AND DON'T SEE:

10 year Homeowner Warranty (HOW)
Oversized ceramic tile in foyer
Plus wall to wall carpeting in choice of decorator colors
8 foot high double entry wood front doors
8 foot high Sliding Glass doors
8 foot high interior doors (Antigua and Aruba models)
French doors in dining room (Martinique)
Vaulted or volume ceilings
Marble window sills
Utility room with laundry tub and washer/dryer connections
Quality vinyl flooring in utility rooms
Prewired telephone, cable TV and fan outlets
Prewired for optional freezer
Lever action on all interior doors
Wood louver bifold closet doors
Smoke detectors
Prewired for garage door opener
Decorator selected interior lighting package
200 Amp electrical service

KITCHENS TO DELIGHT ANY HOMEOWNER:

General Electric appliance package including:
Heavy duty waste disposer
Potscrubber dishwasher
Built in double oven with microwave top (most models)
Hi-low self cleaning oven with microwave (Antigua)
Separate cook top (most models)
Side by side 23.6 cubic ft. refrigerator/freezer with ice and water dispenser in door
European style mica cabinetry with full backsplash
Double enamel or stainless steel sink with spray attachment
Eat in breakfast area
Oversized ceramic tile in kitchen and breakfast area

EXCEPTIONAL MASTER SUITES AND BATHS:

Oversized Neo-angled stall shower with clear glass enclosure (master bath)
Neo-angled cultured marble Roman Tub (master bath)
His and Hers vanities with cultured marble tops
European style vanities
Elongated water closets
Ceramic tile on floor and wet areas

Air conditioned full baths
Air conditioned master walk-in closets
Full width mirror over vanities
Medicine cabinets in all full baths

ENERGY SAVING FEATURES:

High efficiency two zone air conditioning and heating with programmable thermostat
66 gallon double element hot water heater with quick recovery
Fully insulated exterior walls and roof with attic radiant barrier
Tinted windows

EXTERIOR TREATMENTS ADD MORE VALUE TO YOUR HOME:

Flat cement tile roof in choice of colors
Interlocking brick pavers on straight driveway and front entry walkways
Lushly landscaped and fully sodded grounds
Automatically timed sprinkler system with pump and well
Spacious patio area
2 or 3 car garage
Rough sawn cedar fascia
Weather protected private entry
Coach light wiring on both sides of garage
Exterior electrical receptacles
Rear floodlight outlets
Exterior hose bibs
Raised panel metal garage doors with glass inserts
ESP bronze or white window frames
Termite treated foundation

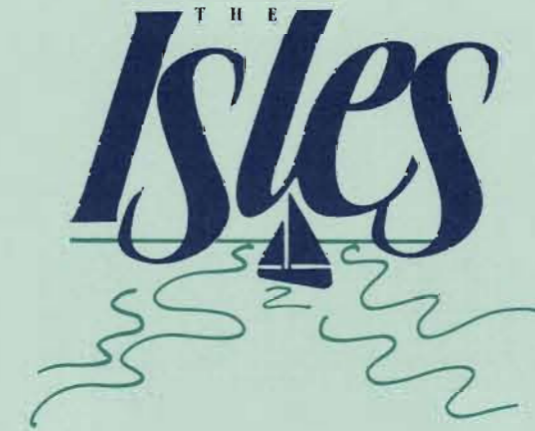
NEIGHBORHOOD FEATURES OF THE ISLES:

A walled community with guard house entrance
Underground utilities
Community sidewalks
City water and sewer
Custom designed mailbox

AN ARRAY OF OPTIONS IS AVAILABLE TO CUSTOMIZE YOUR HOME AND EXPRESS YOUR INDIVIDUALITY. CHECK WITH YOUR SALES REPRESENTATIVE FOR DETAILS.

Because we continually update our product, features may change and may vary depending on home selection. Builder reserves the right to substitute brand name equipment, materials and appliances at his discretion and subject to availability.

The Isles at SilverLakes
17805 NW 15th Street
Pembroke Pines, Florida 33029
433-9995 or 433-9996



M A R T I N I Q U E



954-818-6092

TroyWilson@kw.com

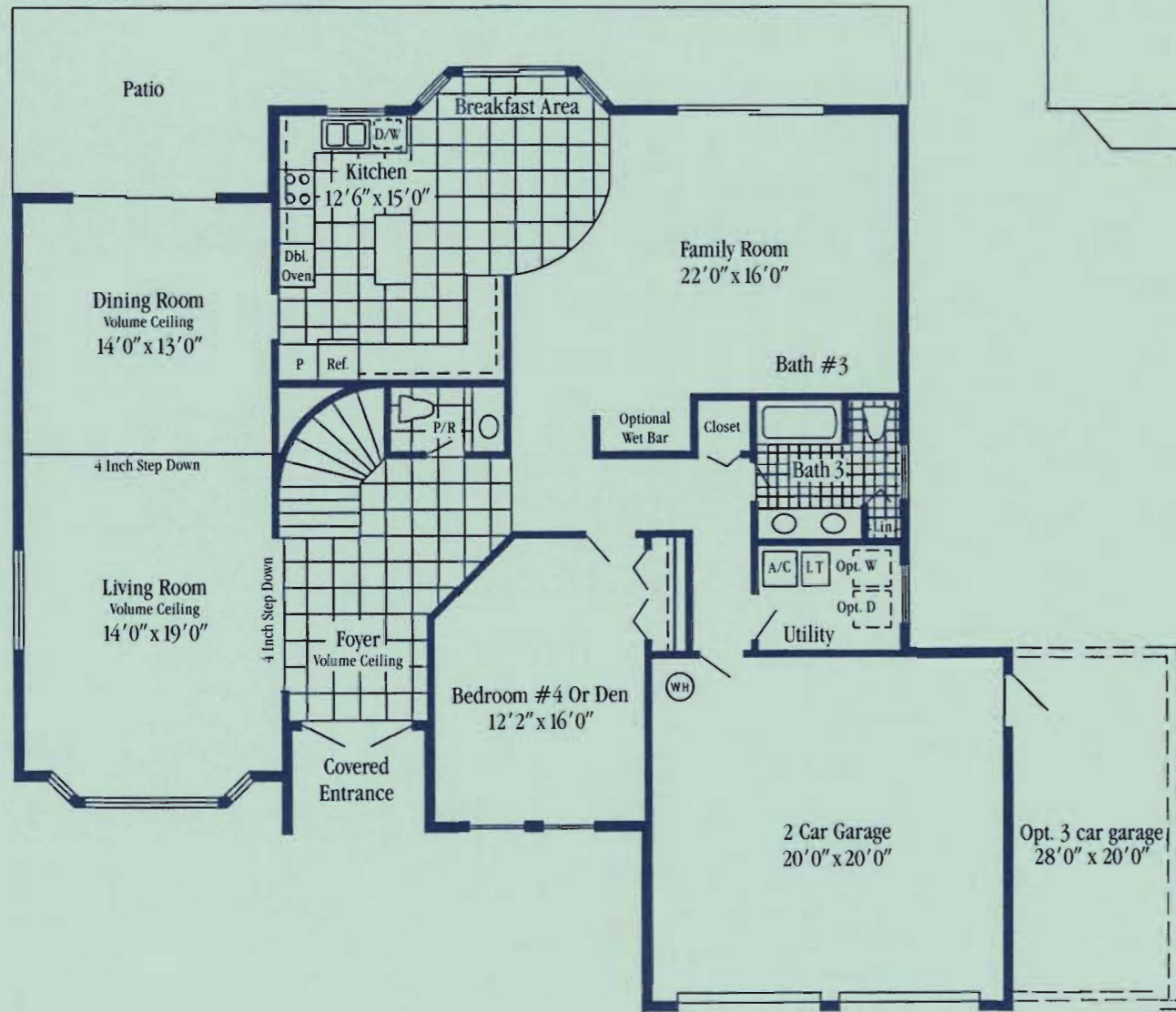
www.TheWilsonRealEstateGroup.com



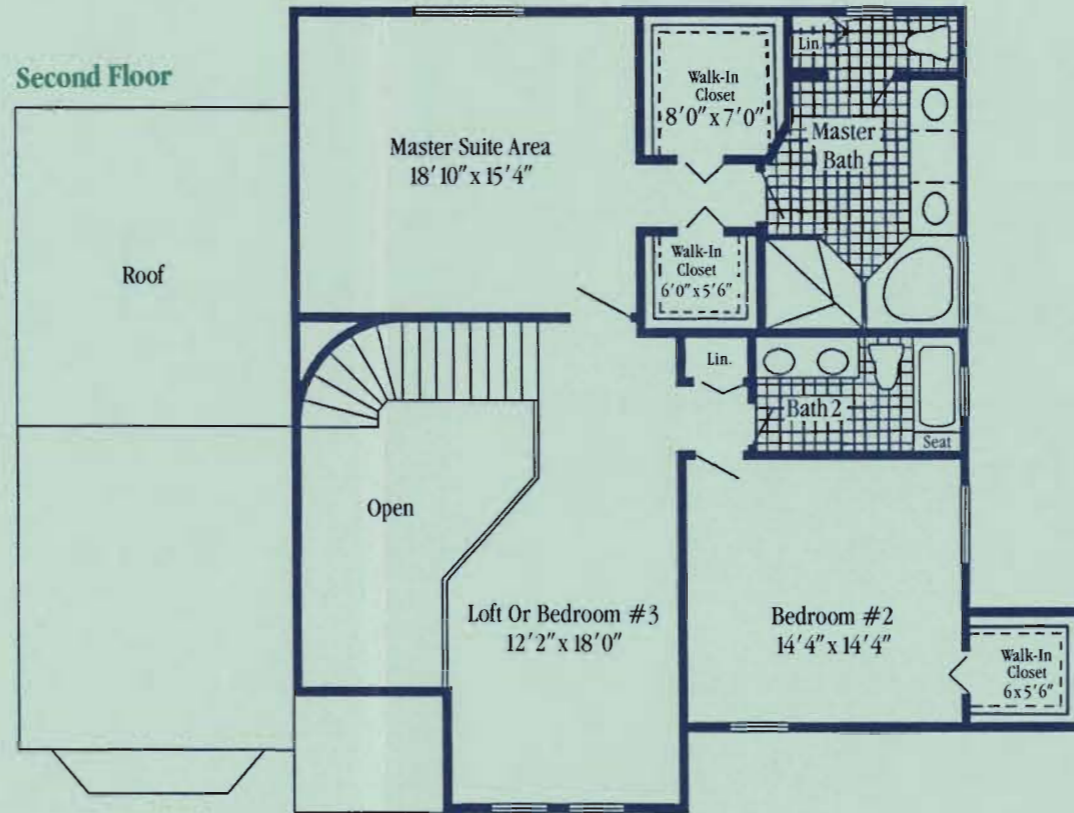
MARTINIQUE

2 story, 4 or 5 Bedrooms, 3 1/2 or 4 1/2 baths
 3,013–3,300 sq. ft.
 of living area

First Floor



Second Floor



Second Floor Alternate

