

FEATURES

SILVERLAKES FEATURES

- Florida Quality Development; (FQD) a designation by the state that requires the developer to meet and exceed all criteria in infrastructure, amenities, and a commitment to preserve the environment
- Superb location for easy access to South Florida's business, shopping, and recreation
- Quality schools for your children
- 750 acres of lakes
- 30 miles of lakefronts
- Beautiful entry feature and landscaping
- Community pool, sundeck, cabana baths
- Sandy beaches with sailboat and canoe docks
- Tot lot and picnic area
- A planned 18-hole championship golf course
- A planned country club facility, tennis, and fitness center

TREASURE SHORES COMMUNITY FEATURES

- One of South Florida's largest and most respected builders; G.L. Homes of Florida
- An island of 89 residences surrounded by a 200-acre lake
- Beautiful entry feature with landscaping
- Sidewalks throughout your community
- Street lighting
- Underground utilities, municipal water and sewer services

OUTSIDE YOUR HOME

- Minimum lot size of approximately 7,000 square feet
- Rolled cement tile roof in spectacular solid or antique colors
- Professionally designed landscaping
- Fully-sodded lawn with sprinkler system
- A choice of two Mediterranean-styled front elevations per model
- Covered front entry
- Overhang around house
- Weather resistant metal garage door with accent panels
- Architecturally accented and insulated metal front door, with dead-bolt lock and security viewer
- Doorbell

INSIDE YOUR HOME

- Quality workmanship and materials
- Ceramic tile in choice of designer colors in foyer

- Expansive, dramatic volume or 10' raised ceilings in selected areas
- Walk-in closets in all master bedroom suites
- Wall-to-wall carpeting in choice of designer colors
- Air conditioner ducts in bathrooms and walk-in closets
- Rounded edges on interior walls
- Wood bi-fold louvered closet doors
- Six-panel colonial-style interior doors
- Wood colonial molding
- 100% circuit breaker panel with 200 amp service
- Copper wire electrical distribution system
- Pre-wired for cable and telephone
- Planter shelf in selected models
- Safety tempered sliding glass doors
- Clerestory, glass block and/or palladium windows in selected models
- White architectural window frames and screens throughout with mutton bars on all front windows
- Spacious family rooms in all models
- Two- or three-car garage, pre-wired for automatic door openers

KITCHEN AND LAUNDRY

- General Electric high-efficiency upgraded kitchen and laundry appliance package
- 21.6 cubic foot side-by-side, frost-free refrigerator with exterior ice and water dispenser
- Potscrubber dishwasher
- Range with self-cleaning oven
- Built-in, space-saving microwave
- Food disposal
- European-style mica cabinets with back splash and adjustable shelving
- Single lever faucet in choice of 3 designer colors
- Double compartment sink in choice of 3 designer colors
- Built-in snack bar in select models
- Food preparation island in select models
- Separate breakfast rooms
- Ceramic tile in kitchen and breakfast rooms in choice of designer colors
- Storage pantry in all models, with vinyl-coated shelving

- Full capacity washer
- Full capacity dryer

BATHROOMS

- Cultured marble, Corinthian tub in master baths
- Cultured marble vanities with his and hers sinks in master baths
- Shower stall with tempered glass enclosure in master baths
- Ceramic tile in wet area of master and guest baths
- Water closet and additional space available for optional bidet (in select models)
- Oversized mirrors
- Mirrored medicine cabinets
- Mica vanity and cast enamel sink in guest baths
- Shower/tub combination in guest baths
- Single lever faucet for all sinks, tubs, and showers
- Decorative light fixture above mirrors
- Models 3, 4, 6, 11, 13, 14 and 15 include powder room
- Models 5, 13 and 14 include a cabana bath

SILVERLAKES ENERGY EFFICIENCY PROGRAM OFFERING ADDED COMFORT, CONVENIENCE AND SECURITY

- Two exterior flood lights and 3-way switch
- Coach lights on each side of garage
- Three exterior G.F.I. outlets
- Pre-wired for ceiling fans in all bedrooms and family room
- 50-gallon high efficiency electric water heater
- Energy efficient air conditioning system with heat
- Convenient programmable thermostat
- R-30 ceiling insulation
- R-3 exterior wall insulation
- R-11 batt insulation between interior and garage wall
- Sprayed acoustical ceilings

ALL HOMES PROTECTED BY PREFERRED BUILDERS WARRANTY (PBW)

All illustrations shown in this brochure are artist's renderings. All dimensions are approximate and should be verified by the purchaser. All plans, features, and appliances are subject to change or substitution deemed advisable by builder, architect, or as required by law.

On alternate elevations not shown (in model row, ceiling heights and direction of trusses may vary. See your sales consultant for further details.

ANTILLES/4

2-story, 4 bedroom, 2 1/2 bath home with family room,
2-car garage and loft/optional 5th bedroom.



Elevation A



Elevation B



Keller Williams Realty Partners, SW

954-818-6092

TroyWilson@kw.com

www.TheWilsonRealEstateGroup.com

TREASURE SHORES



SILVERLAKES

TREASURE SHORES



SILVERLAKES

17852 N.W. 15th Court, Pembroke Pines, FL 33029. (305) 437-3000.

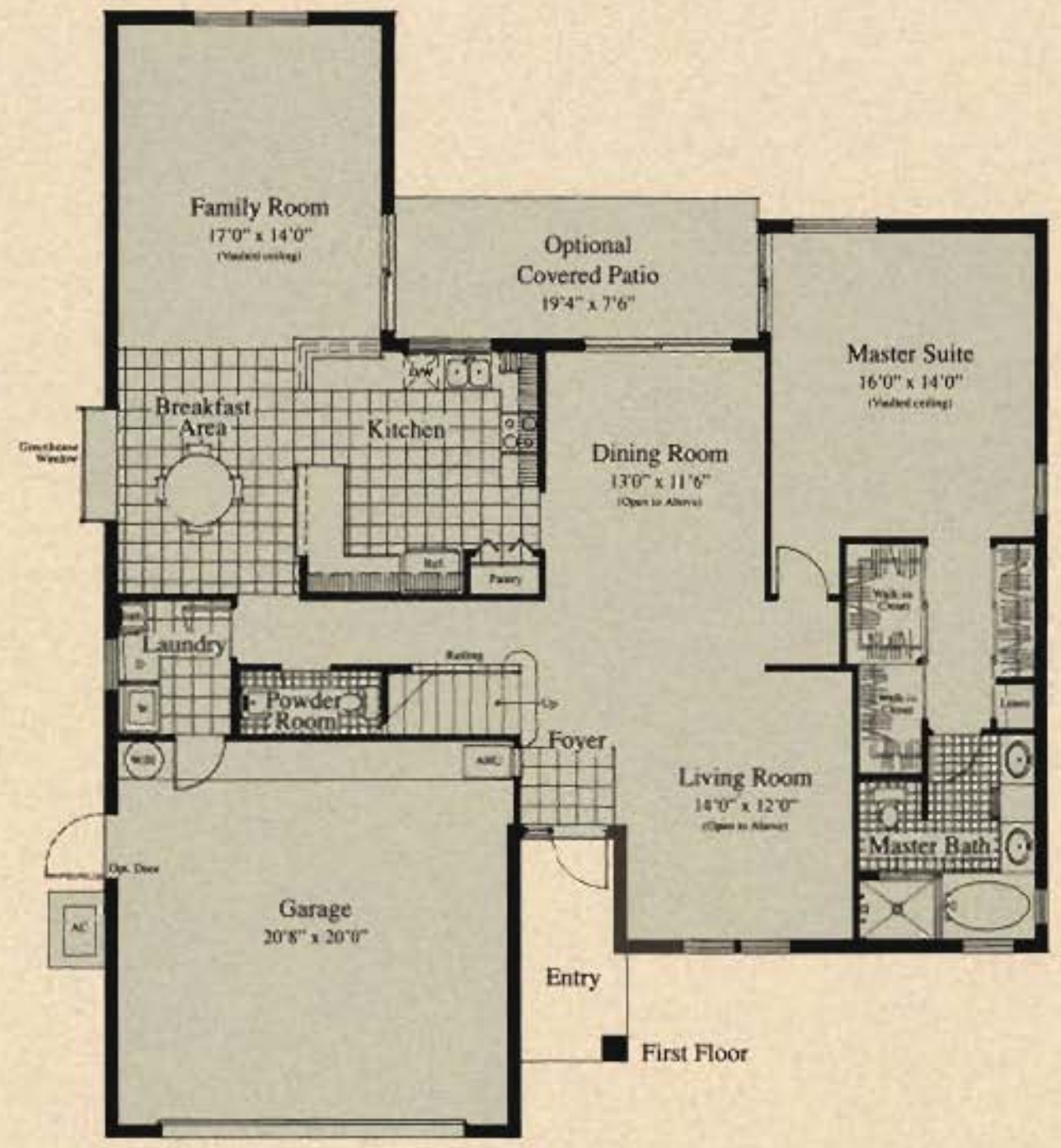
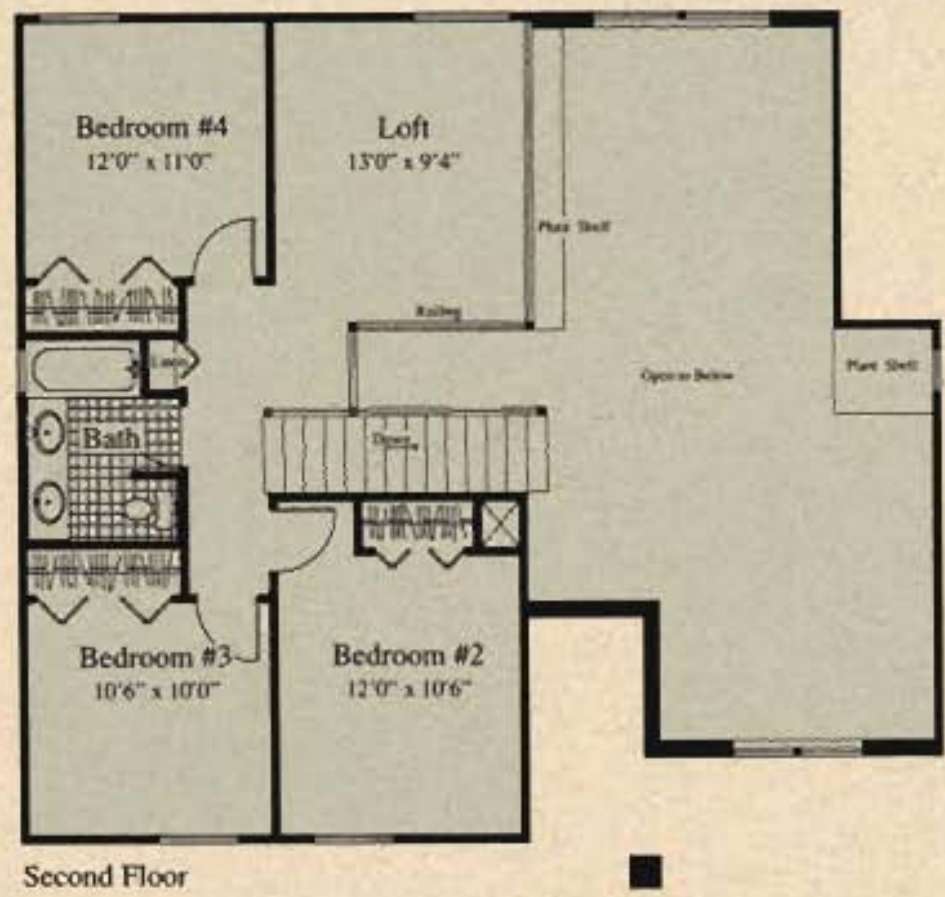


You, the customer, are our greatest asset. We thank you for choosing a G.L. Homes of Florida home.



ANTILLES/4

2-story, 4 bedroom, 2 1/2 bath home with family room.
2-car garage and loft/optional 5th bedroom.



| Square Footage | |
|---------------------|-------------|
| First Floor | 1673 |
| Second Floor | 714 |
| Total AC Space | 2387 |
| Garage | 455 |
| Total sq.ft. | 2842 |

All illustrations shown in this brochure are artist's renderings. All dimensions shown are approximate and should be verified by the purchaser.